

Curated Selection



Flokk

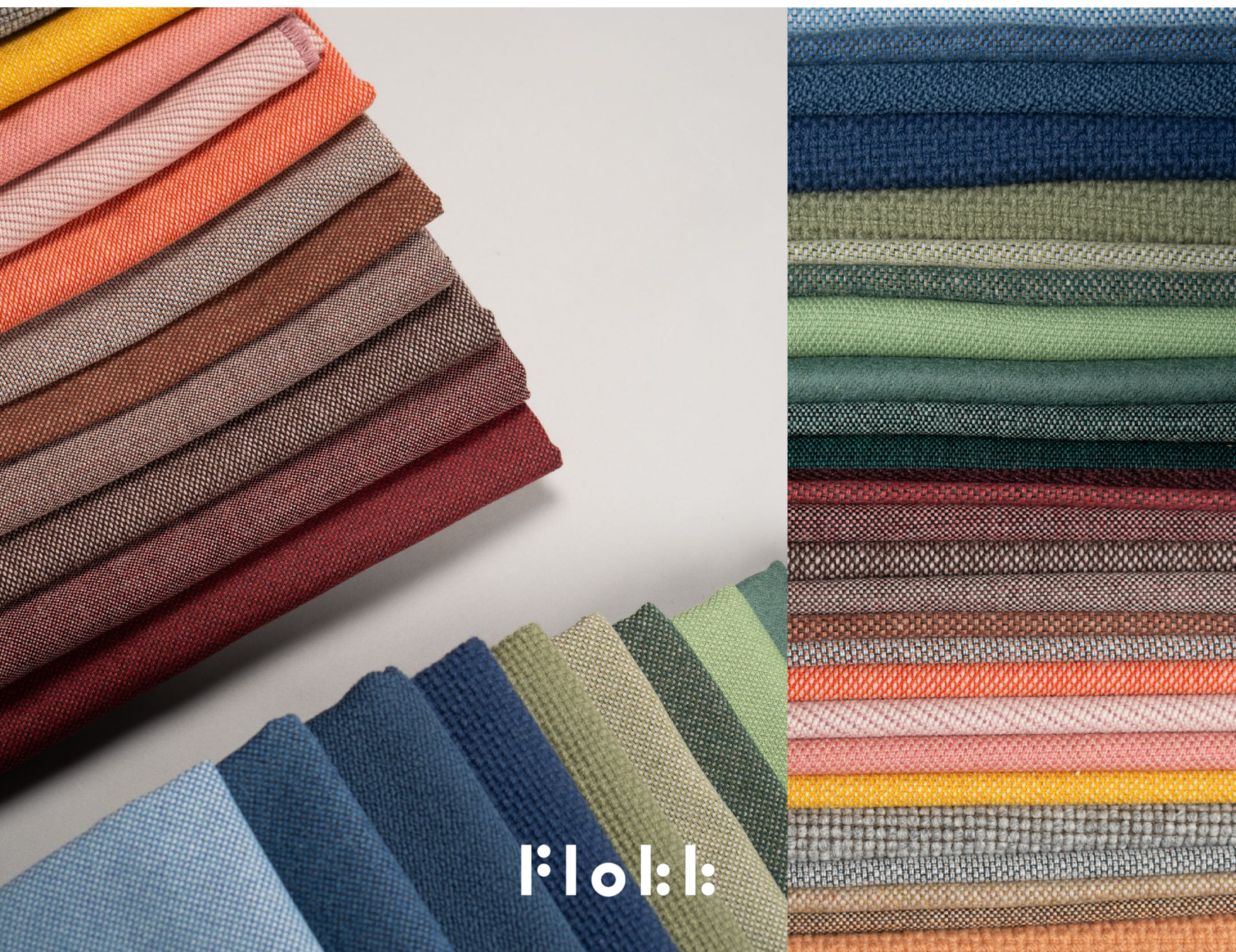
Curated Selection

Brings clarity, cohesion and confidence to specification across Flokk brands.

Flokk Curated Selection is a selected range of fabrics and colours developed to make specification easier. It brings together textiles that work well across our product portfolio, helping create consistency between spaces while supporting long-term use.

Colour plays an important role in how a space feels and functions. The curated selection is designed to work as part of a wider palette, making it easier to build environments that feel balanced, coherent and intentional.

Flokk Curated Selection presents a palette of 40 handpicked fabrics and colours, primarily sourced from our Extended Collection and complemented by a few qualities from our Standard Collection.



flokk

Connect, **Collaborate** and **Focus** describe three key types of workspace, supporting a more balanced workplace. These spatial types form an ecosystem that enables different activities throughout the day.

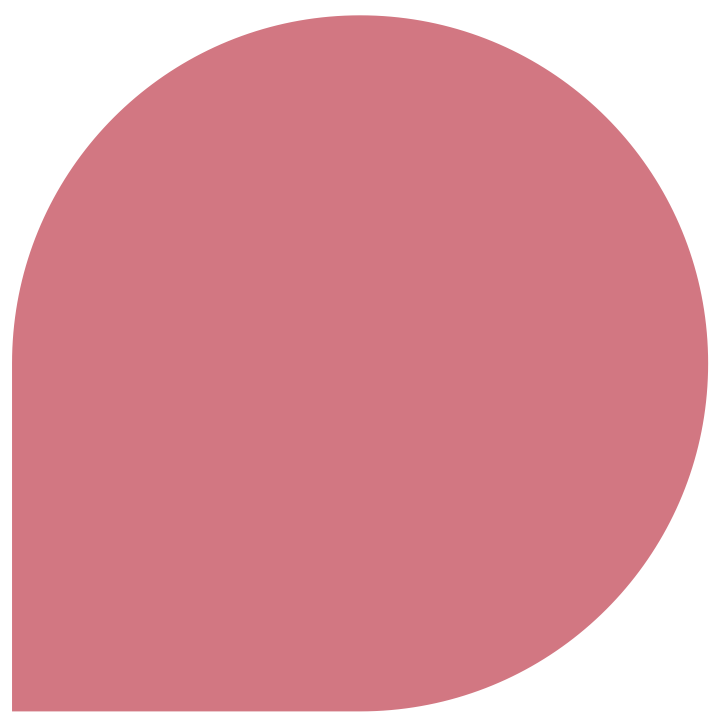
Each key type is divided into two parts: **Dynamic** and **Refined**. This allows each space to respond to different needs. Dynamic supports movement, energy and informal use, while Refined creates a calmer, more structured setting for focus and precision.



Connect
fosters social
relationships

Collaborate
drives collective
results

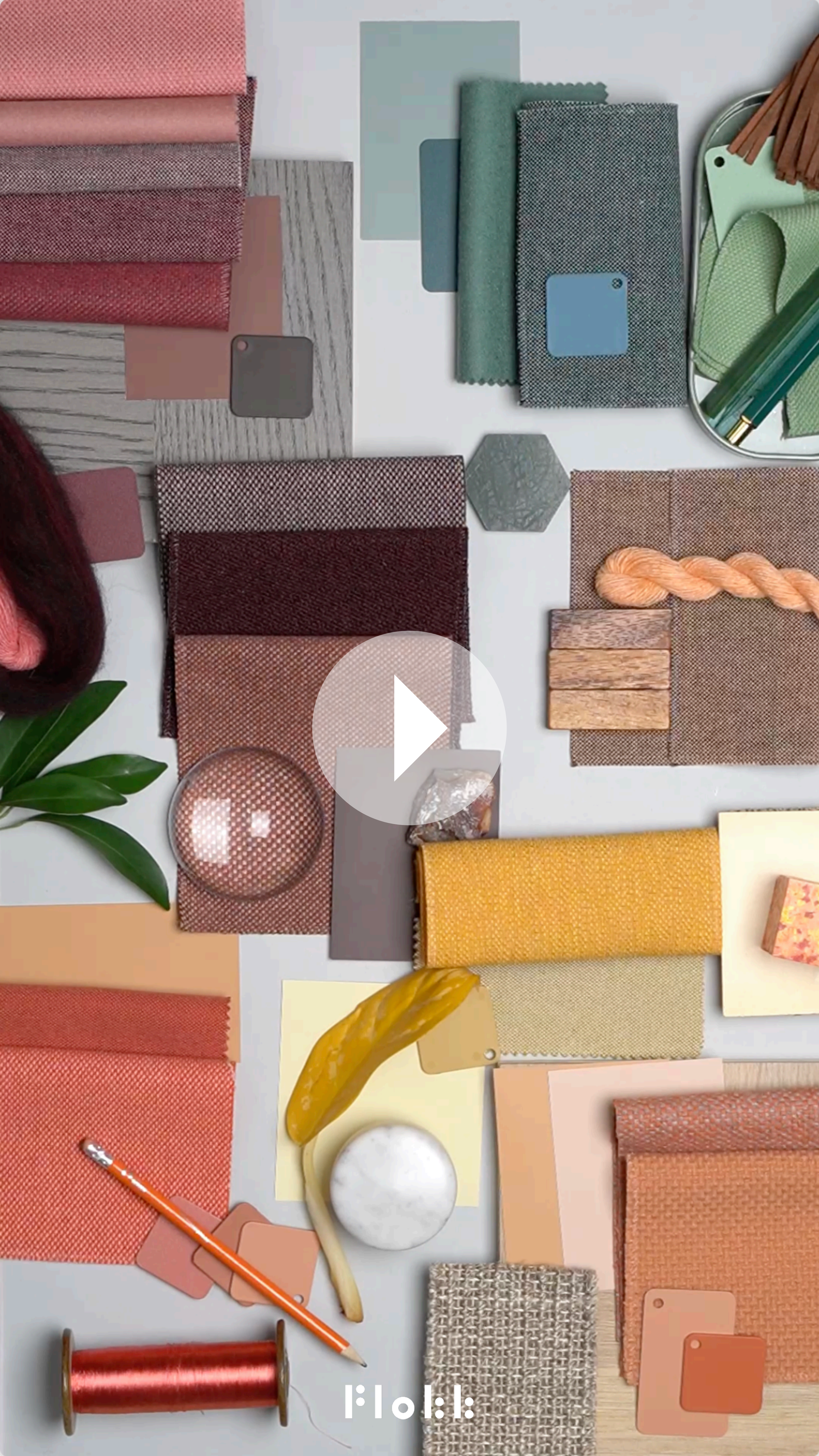
Focus
enables individual
performance



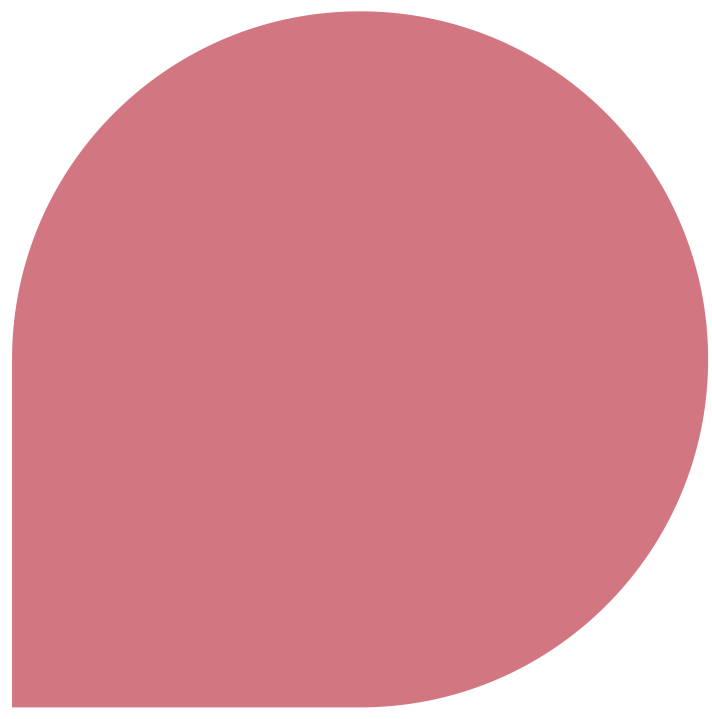
Connect Dynamic

Social spaces rely on warmth and energy to support informal interaction. These are places for informal meetings, quick conversations and shared moments. Warm tones set the mood, while brighter accents introduce rhythm and movement. Used together, they create a space that feels open, engaging and naturally social.



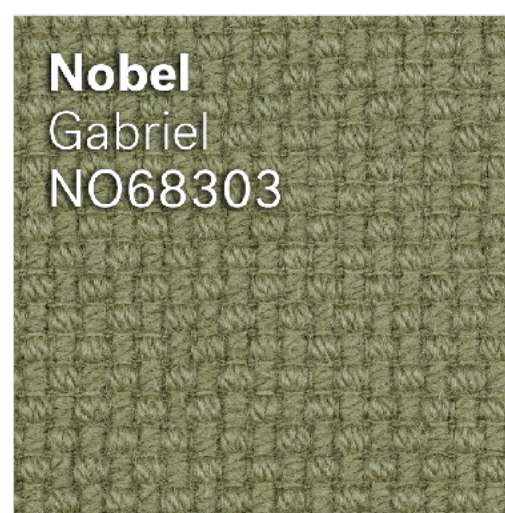


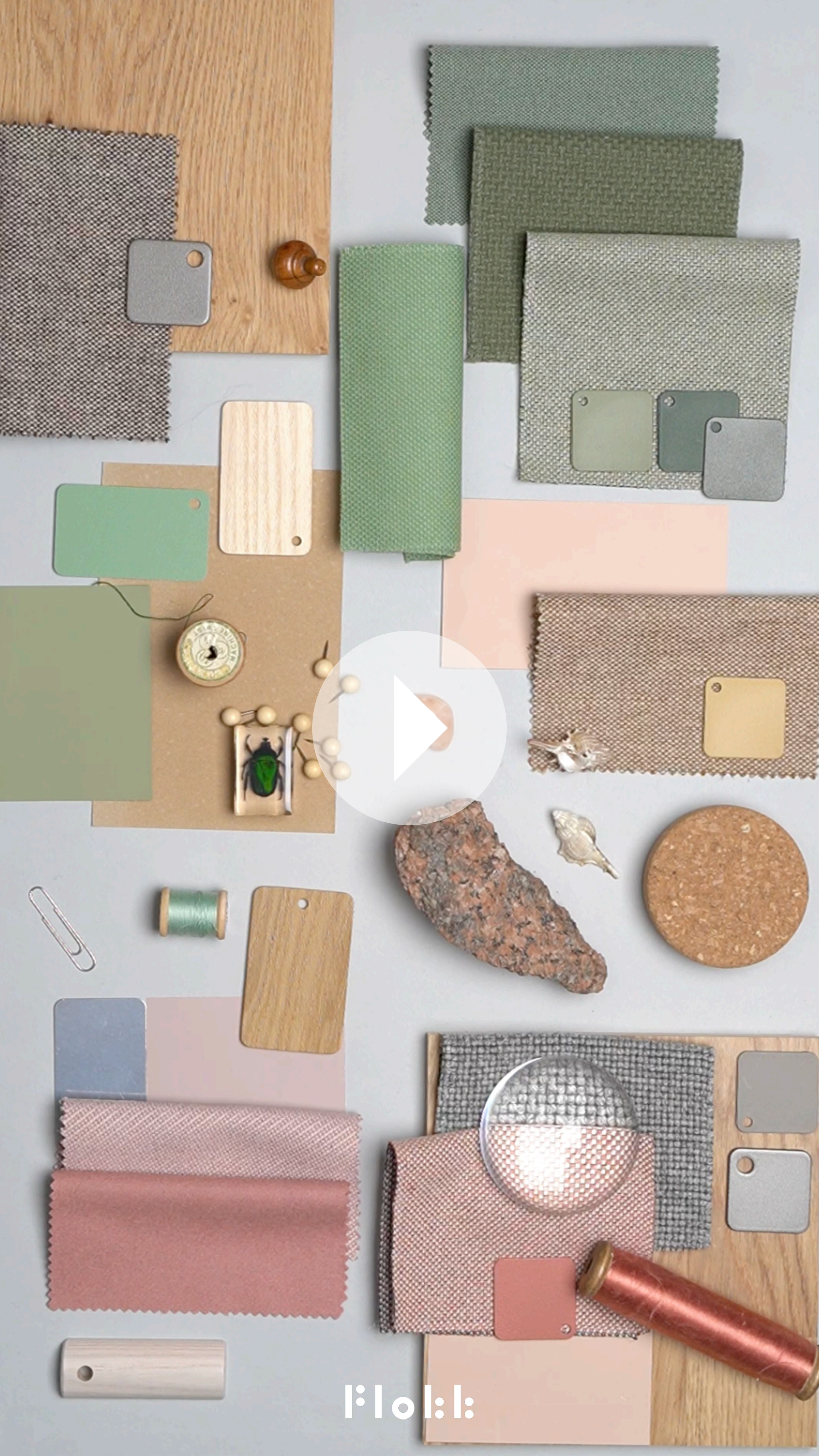
Flora



Connect Refined

A more subdued palette creates a calm and considered atmosphere in shared spaces. Soft greens, deeper earthy tones and muted pinks work together to form a balanced composition with gentle contrast. The result is a space that feels composed, comfortable and quietly refined.





Flokk

Connect Products

Profim
Decenta



OFFECCT
Circulus



OFFECCT
On-Point



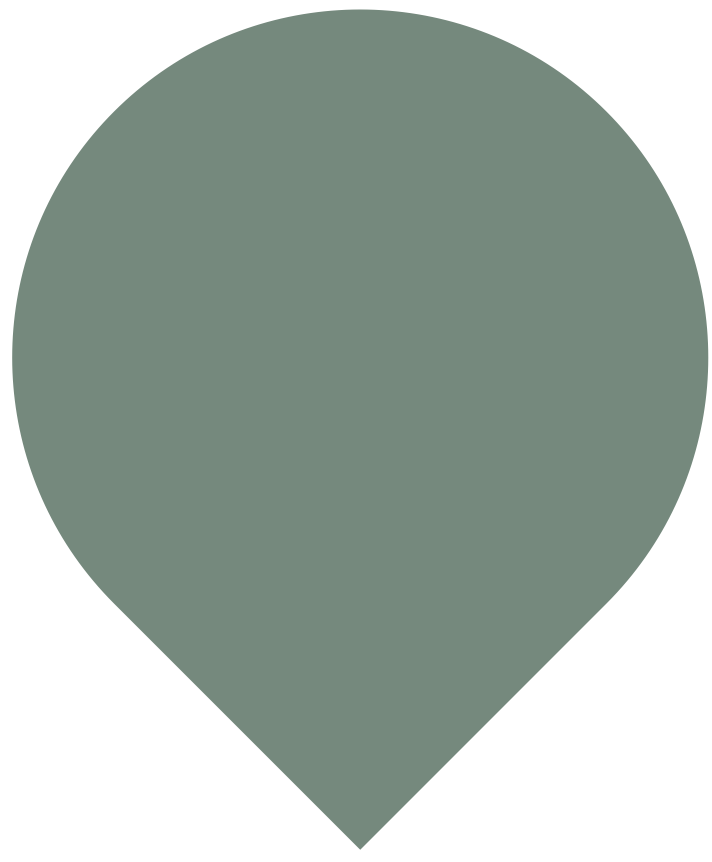
HÅG
Celi





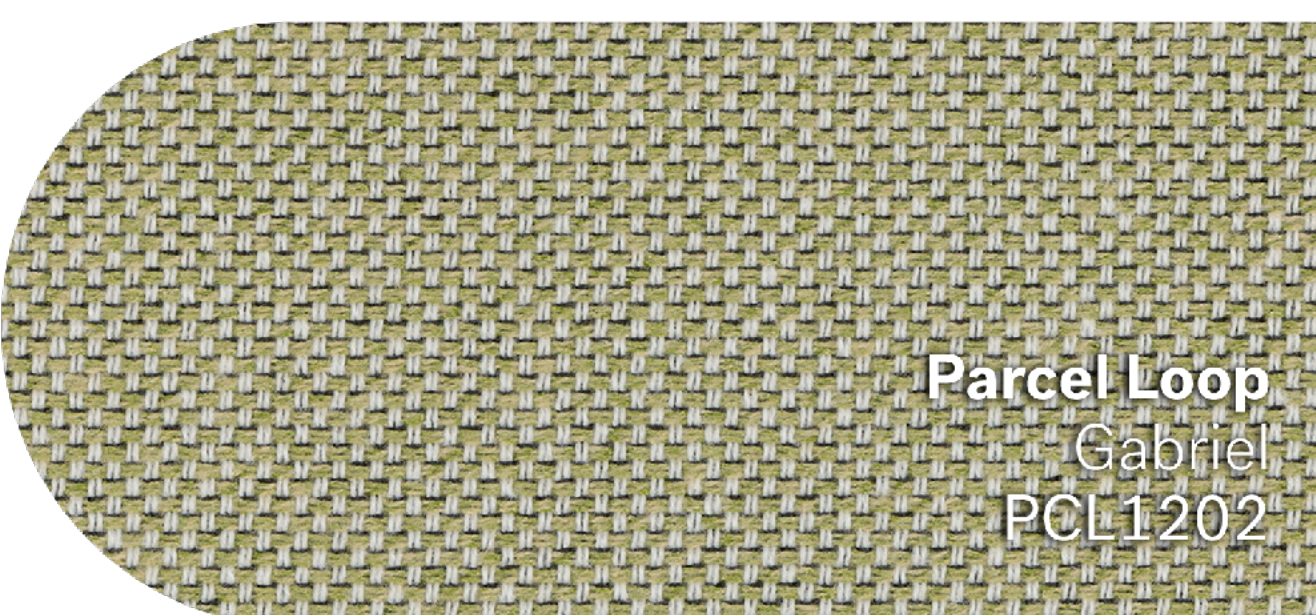
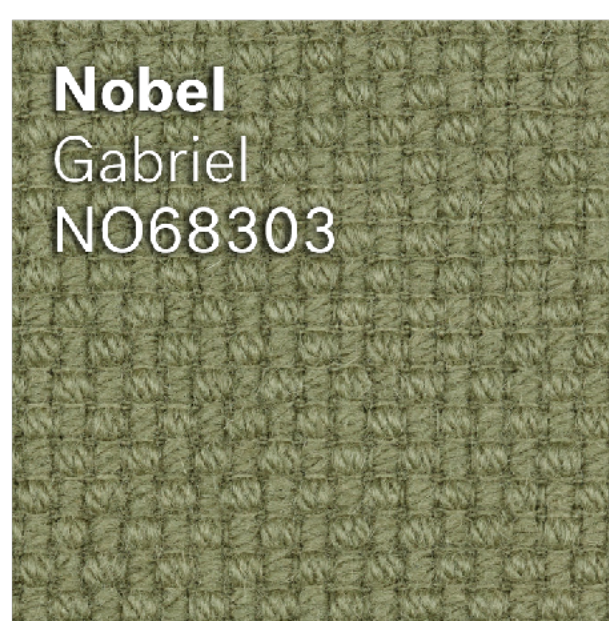
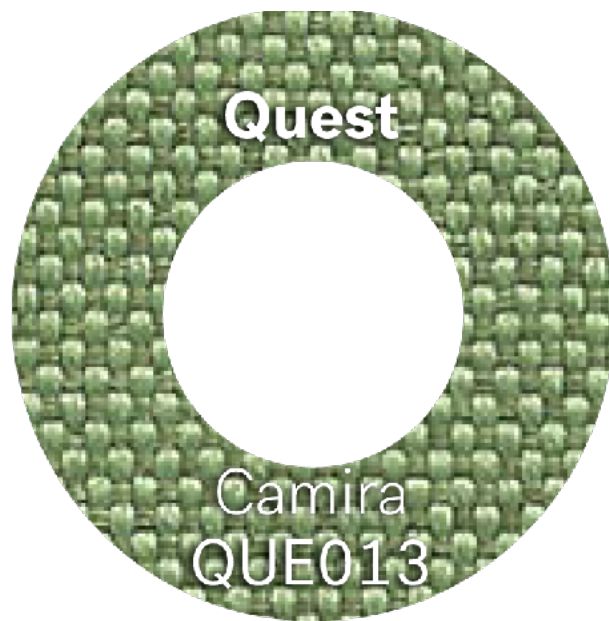
Connect spaces
Coffee corner
Lounges
Common areas
Canteens
Waiting area/room
Airports
Lobbys

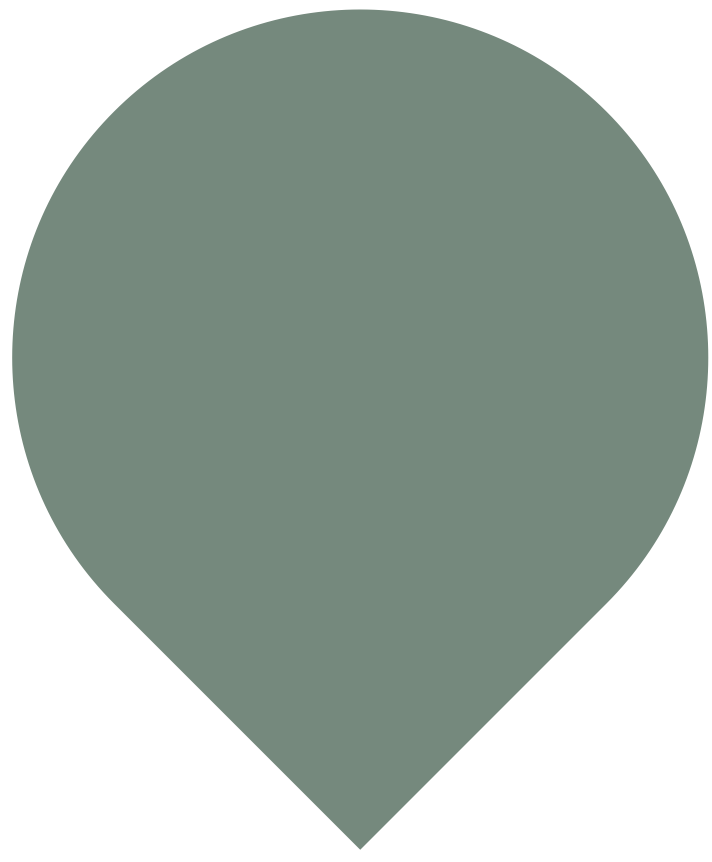




Collaborate Dynamic

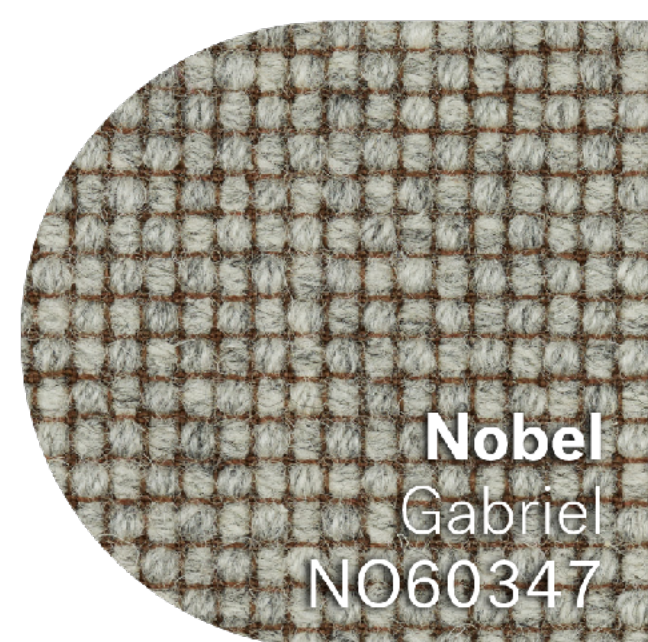
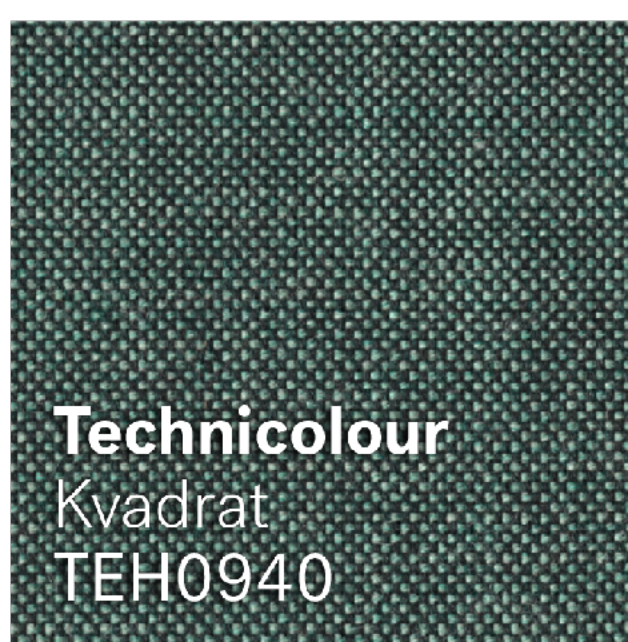
Green-led palettes support focus and clarity in meeting and co-working spaces. Layered with deeper browns and wood tones, they introduce depth and a natural sense of balance. Subtle variation in hue and texture keeps the space visually engaging while maintaining a cohesive atmosphere.

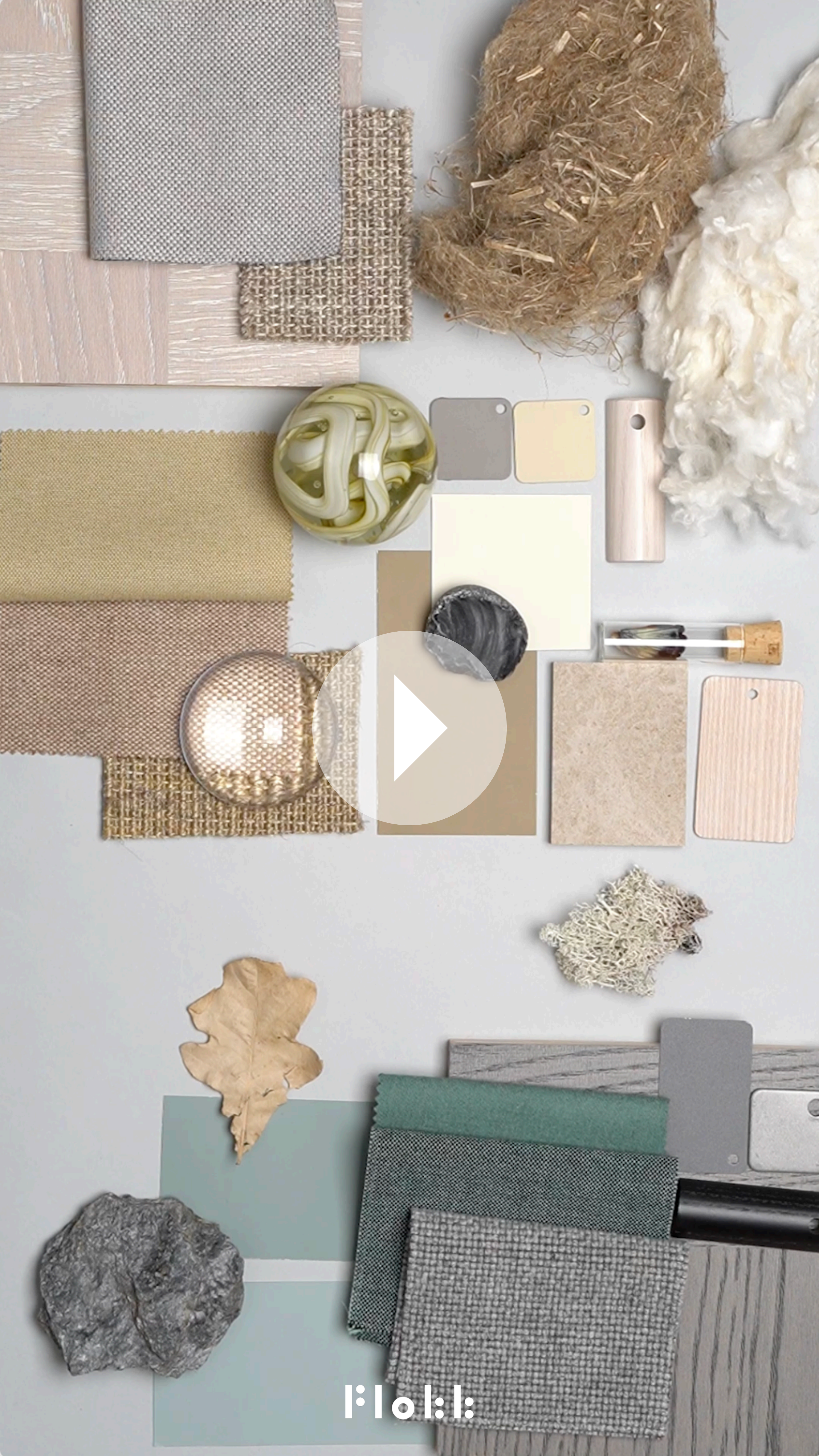




Collaborate Refined

Drawing from the depth of the sea and the softness of fields and meadows, this palette brings balance and refinement to collaborative spaces and focused meetings. Variation in light and dark tones introduces subtle movement, while a more restrained approach creates a calm, composed expression.





Flo:l:

Collaborate Products

HÅG
Minu



OFFECCT
Carry-On
& On-Point



RH
Mereo Mesh



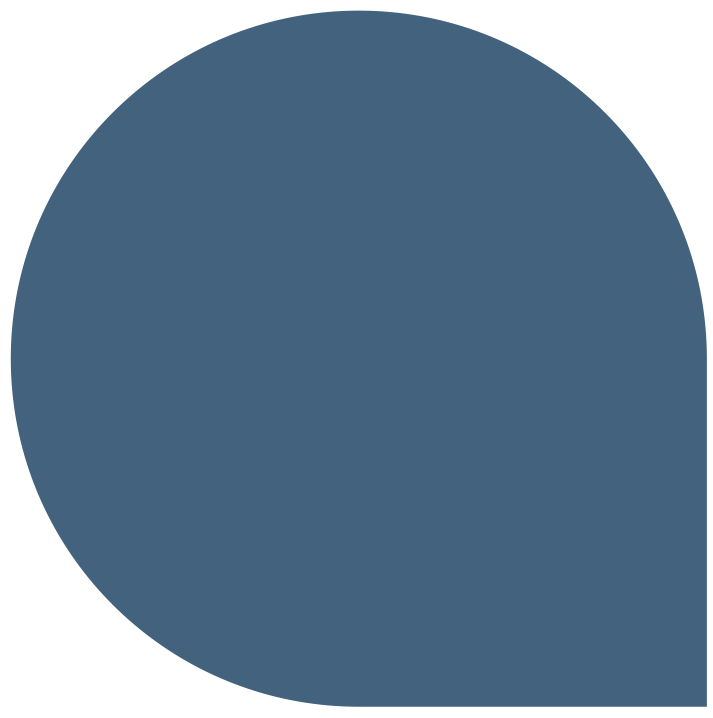
Profim
Snap





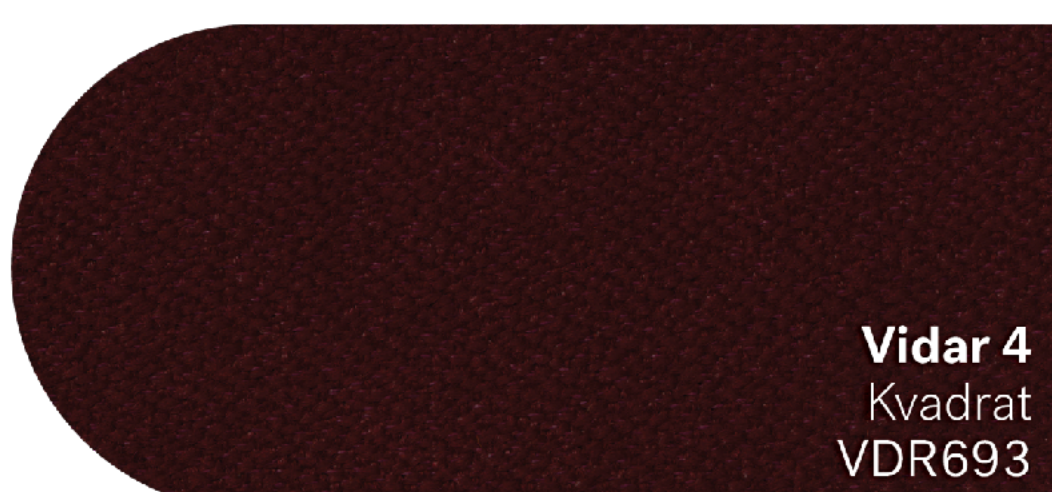
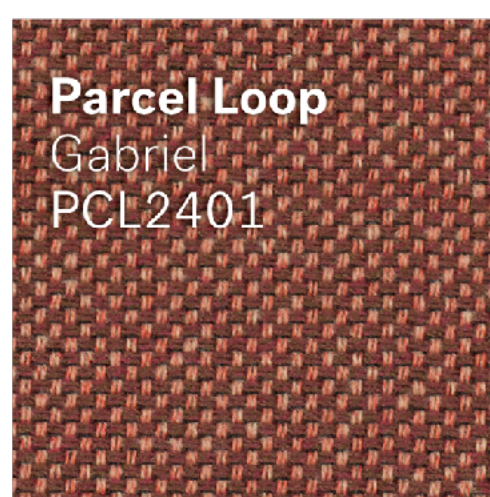
Collaborate spaces
Meeting rooms
Co-working spaces
Seating areas in
common zones

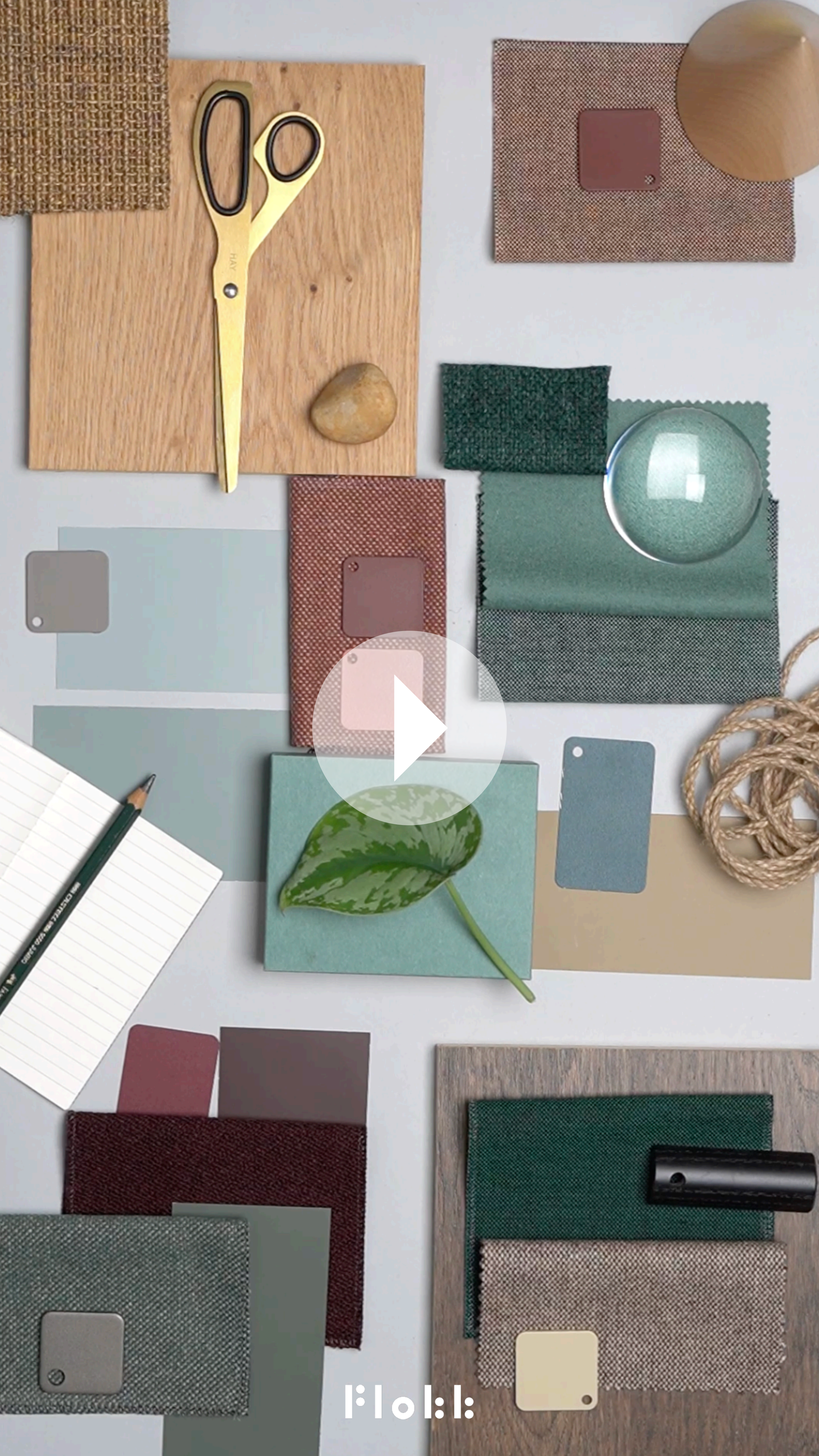




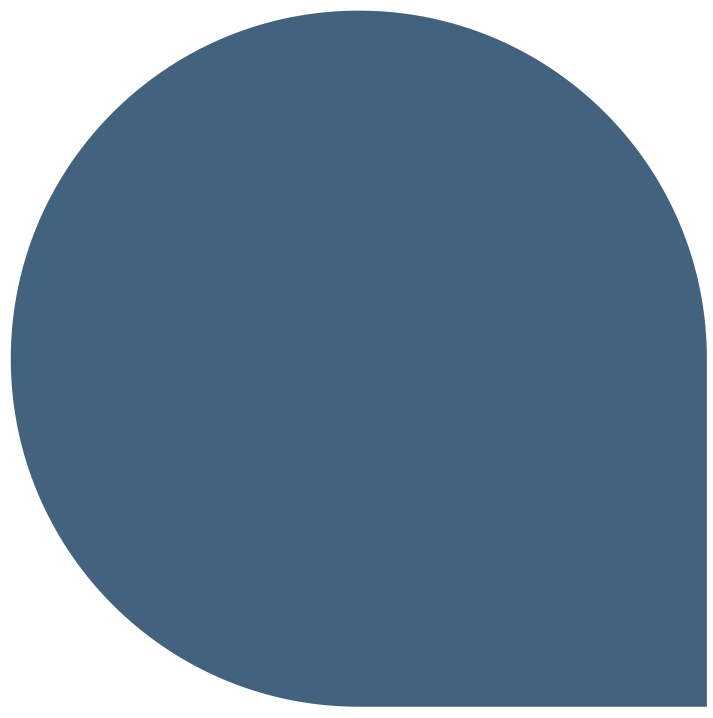
Focus Dynamic

Blue and green tones support focus and mental clarity, helping reduce errors in task-based work. When combined into teal hues, they create a balanced visual field that is easy on the eye. A tone-on-tone approach keeps the space cohesive, while subtle contrast adds enough variation to maintain attention throughout the day.



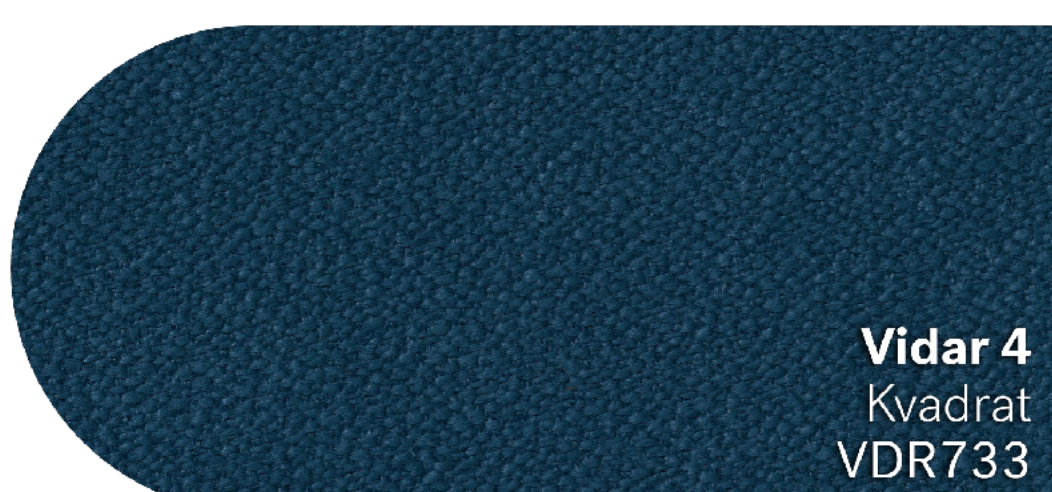
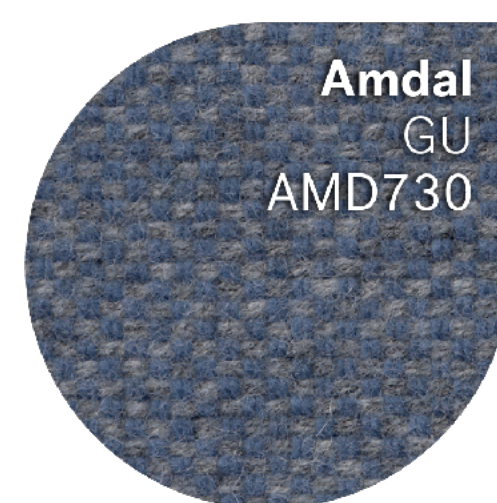
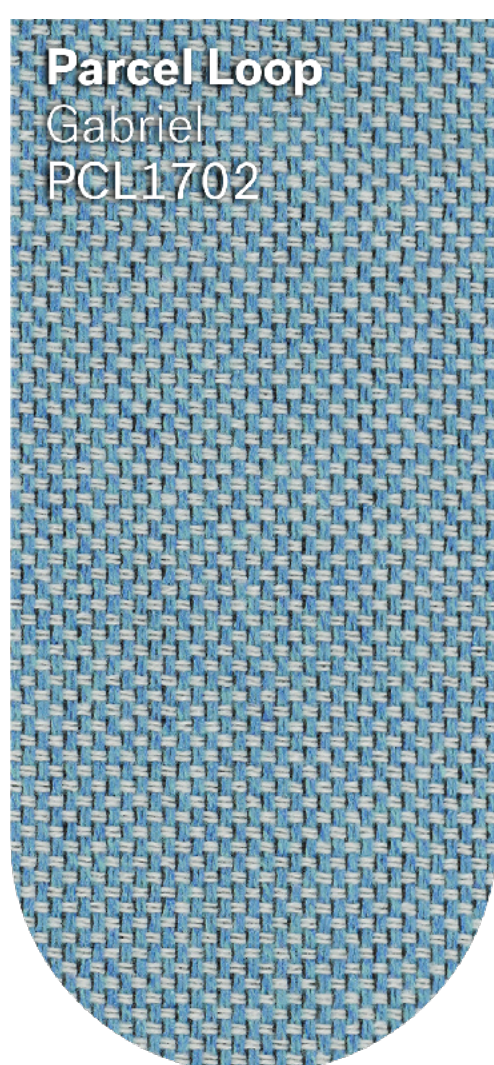


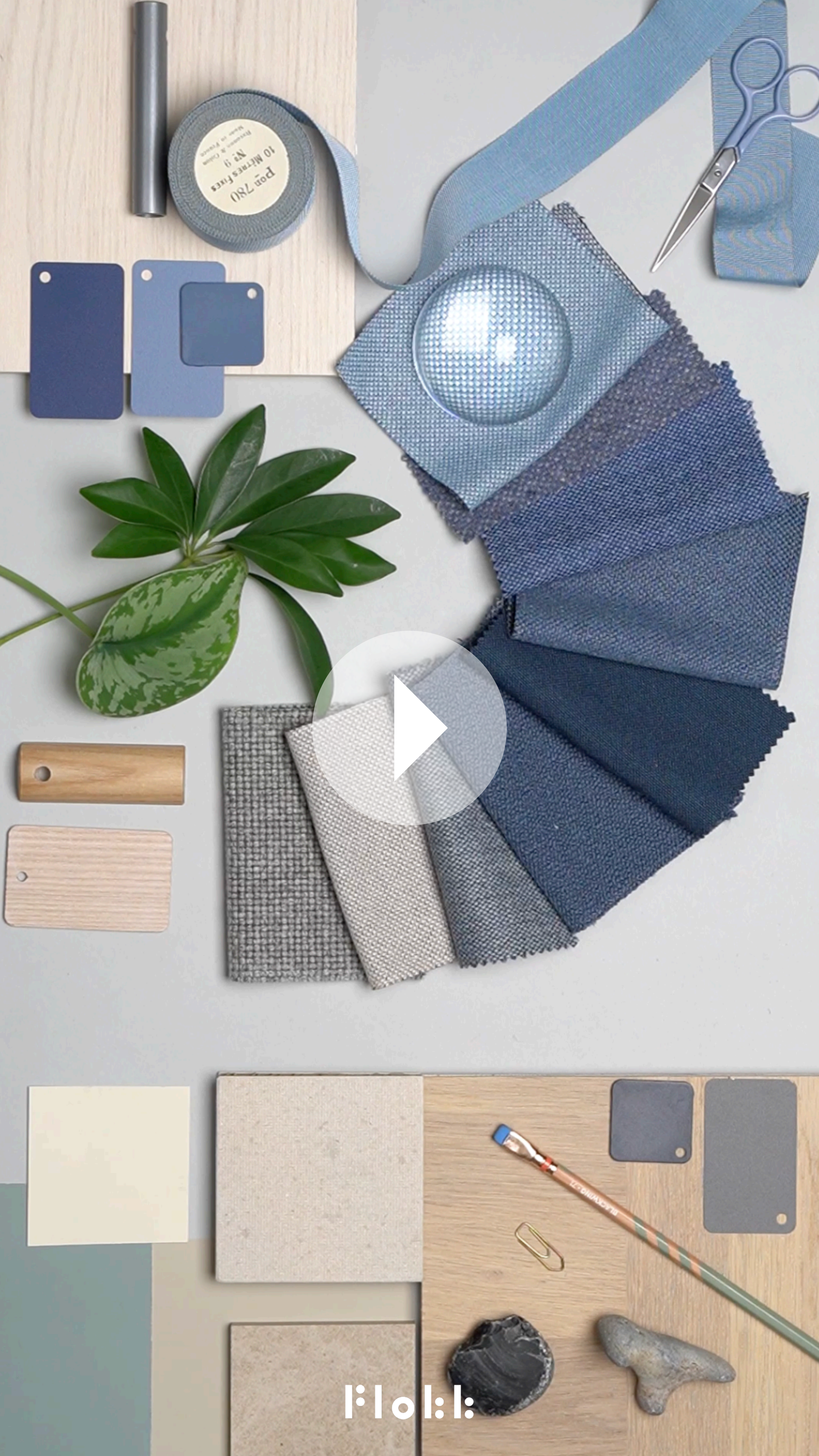
Flokk



Focus Refined

Blue and grey tones create a neutral, calming base for focused work. Blue supports concentration, while grey works best as a quiet supporting shade, preventing the space from feeling flat or heavy. When combined with natural materials such as wood and stone, the palette feels balanced, grounded and well suited to sustained attention.





l:l:l:l

Focus Products

HÅG
Capisco



Profim
Vancouver Lite



RH
Logic 200/220



OFFECCT
Thelma





Focus spaces
Boots
Quiet rooms
Single offices
Cellular offices
Open quiet zones
Libraries



The palette

40 colours

YELLOW

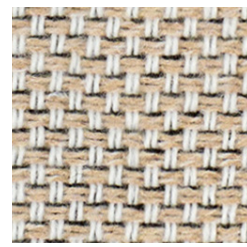


Quest
Camira
QUE021 (3)



Steelcut Quartet
Kvadrat
STQ434 (4)

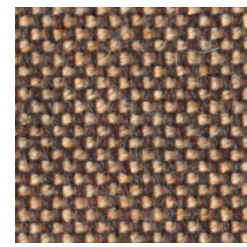
BROWN



Parcel Loop
Gabriel
PCL2001* (3)



Main Line Flax
Camira
MLF012 (3)



Technicolour
Kvadrat
TEH0520* (3)



Main Line Flax
Camira
MLF023 (3)



Nobel
Gabriel
NO60347 (4)

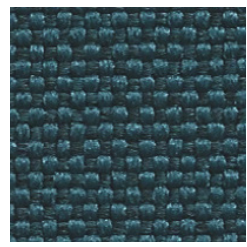
BLUE



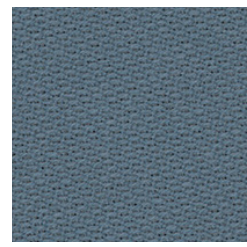
Parcel Loop
Gabriel
PCL1702 (3)



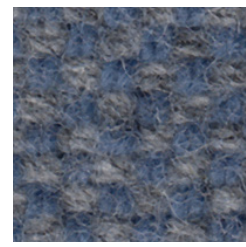
Main Line Flax
Camira
MLF022 (3)



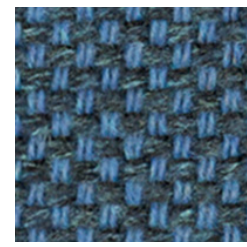
Quest
Camira
QUE008 (3)



Semi
Ludvig Svensson
SEI4342 (3)



Amdal
GU
AMD730 (4)



Parcel Loop
Gabriel
PCL2801 (3)



Vidar 4
Kvadrat
VDR733 (6)

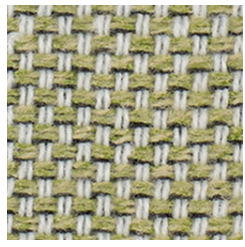


Main Line Flax
Camira
MLF049 (3)



Nobel
Gabriel
NO66267 (4)

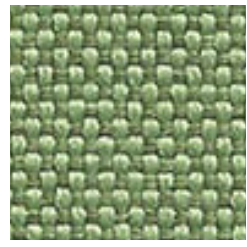
GREEN



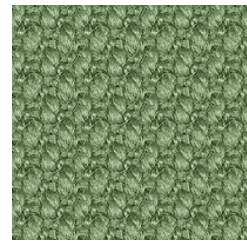
Parcel Loop
Gabriel
PCL1202* (3)



Nobel
Gabriel
NO68303 (4)



Quest
Camira
QUE013 (3)



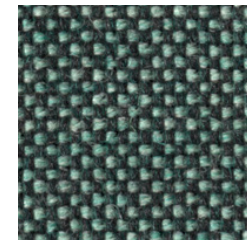
Steelcut 3
Kvadrat
STT912 (4)



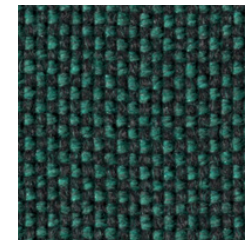
Synergy
Camira
SGY049 (3)



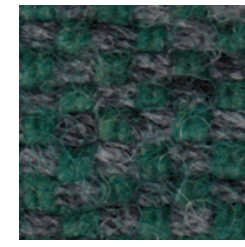
Parcel Loop
Gabriel
PCL3001 (3)



Technicolour
Kvadrat
TEH0940 (3)



Technicolour
Kvadrat
TEH0970 (3)

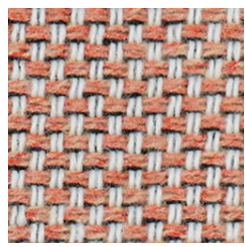


Amdal
GU
AMD885 (4)

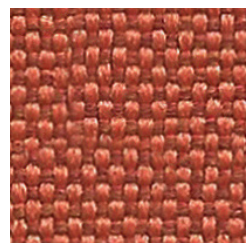
RED



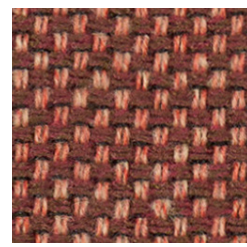
Nobel
Gabriel
NO63141 (4)



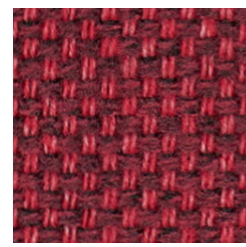
Parcel Loop
Gabriel
PCL2002 (3)



Quest
Camira
QUE024 (3)



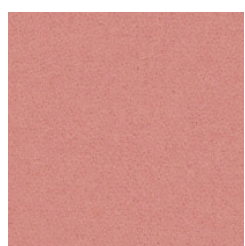
Parcel Loop
Gabriel
PCL2401* (3)



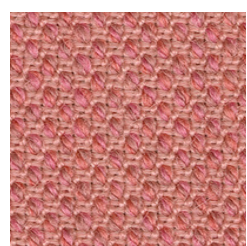
Parcel Loop
Gabriel
PCL2601 (3)



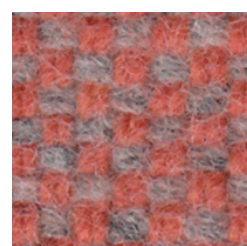
Oceanic
Camira
OCI016 (3)



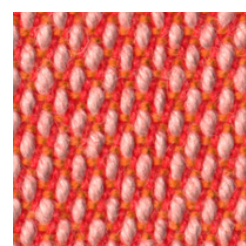
Blazer
Camira
BLA04Q (3)



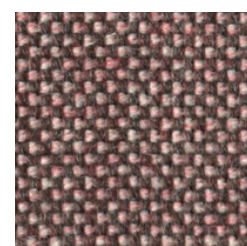
Steelcut Quartet
Kvadrat
STQ534 (4)



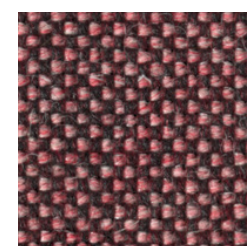
Amdal
GU
AMD545 (4)



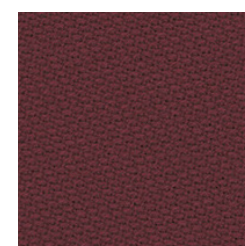
Steelcut Trio 3
Kvadrat
STT526 (4)



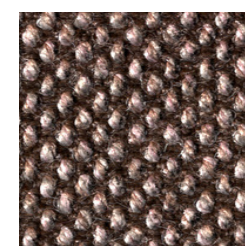
Technicolour
Kvadrat
TEH0620 (3)



Technicolour
Kvadrat
TEH0650 (3)



Semi
Ludvig Svensson
SEI3554 (3)



Steelcut Quartet
Kvadrat
STQ354 (4)



Vidar 4
Kvadrat
VDR693 (6)

Price Group: (3)(4)(6)

The technical spec.

Flokk Curated Selection

TECHNICAL SPECIFICATIONS

	Blazer	Main Line Flax	Oceanic	Parcel Loop	Semi	Synergy	Techni-colour	Quest	Amdal	Nobel	Steelcut Quartet	Steelcut Trio 3	Steelcut 3	Vidar 4
	by Camira	by Camira	by Camira	by Gabriel	Ludvig Svensson	by Camira	by Kvadrat	by Camira	by GU	by Gabriel	by Kvadrat	by Kvadrat	by Kvadrat	by Kvadrat
PRICE GROUP	③	③	③	③	③	③	③	③	④	④	④	④	④	⑥
COMPOSITION (%)														
British Wool	-	-	-	-	-	-	100	-	-	-	-	-	-	-
New Zealand Wool	100	75	-	-	85	95	-	-	70	100	90	90	90	94
Flax	-	25	-	-	-	-	-	-	-	-	-	-	-	-
Polyamide	-	-	-	-	15	5	-	-	-	-	10	10	10	6
Recycled Polyester	-	-	100	100	-	-	-	100	-	-	-	-	-	-
Viscose	-	-	-	-	-	-	-	-	30	-	-	-	-	-
ENVIRONMENTAL FACTS														
EU Ecolabel	•	•	•	•	•	•	•	•	•	•	•	•	•	•
Oeko-Tex® Standard 100	-	-	•	•	•	-	-	•	-	•	-	-	-	-
GREENGUARD Gold	-	-	-	-	-	-	•	-	-	-	•	•	•	•
Indoor Advantage Gold	•	•	•	-	-	•	-	•	-	-	-	-	-	-
Meet Möbelfakta requirements	-	•	•	•	•	•	•	-	-	•	•	•	•	•
Free of heavy metals	•	•	•	•	•	-	•	•	•	•	•	•	•	•
No flame retardant chemicals	-	•	•	•	•	-	•	-	•	•	•	•	•	•
Ansi/Bifma VOC test M7.1	-	•	•	•	-	•	•	-	-	•	•	•	•	•
HPD	-	-	-	-	-	-	•	-	-	-	•	•	•	•
EPD	•	•	•	-	•	•	-	-	-	-	•	•	•	•
FLAMMABILITY														
BS EN 1021 – 1 Cigarette	•	•	•	•	•	•	•	•	•	•	•	•	•	•
BS EN 1021 – 2 Match	•	•	•	•	•	•	•	•	•	•	•	•	•	•
BS 7176 Low Hazard	•	•	•	-	-	•	•	•	-	-	•	•	•	•
BS 7176 Medium Hazard	-	•	•	-	-	-	-	•	-	-	-	-	-	-
BS 5852 Part 1 0 Cigarette	-	•	-	-	-	-	•	•	-	•	•	•	•	•
BS 5852 Part 1 1 Match	-	•	-	-	-	-	•	•	-	•	•	•	•	•
BS 5852 Crib 5 (w/CMHR foam)	-	•	-	-	•	-	-	•	-	•	-	-	-	-
BS 5852 Crib 5 (on request*)	•	-	•	•	-	•	•	•	-	-	•	•	•	•
UNI 9175 Class 1IM	•	•	-	-	•	•	•	•	-	•	•	•	•	•
Önorm B1/Q1	•	•	-	-	-	-	-	-	-	-	•	•	-	-
NF D 60-013	•	•	-	-	-	•	•	-	-	-	•	•	•	•
CA TB 117-2013	•	•	•	•	•	-	•	-	•	•	•	•	•	•
IMO FTP Code 2010 Part 8	•	•	•	-	•	•	•	•	•	•	•	•	•	•
ASTM E 84 Class I (Adhered)	•	-	-	-	-	-	•	-	-	-	-	-	-	-
ASTM E 84 Class I (Unadhered)	•	•	•	•	-	-	•	-	-	•	•	•	•	-
FASTNESS TO RUBBING														
Dry	4	4	4	4-5	4-5	4	4-5	4	4	4-5	4-5	4-5	4-5	3-5
Wet	4	3	4	4-5	3-4	4	3-5	4	3-4	4-5	4-5	3-5	3-5	3-5
OTHER														
Weight (g/m²) ±5%	460	435	655	343	330	400	300	330	485	571	550	550	590	510
Width (cm) ±1 cm	140	140	140	140	140	140	140	137	140	140	140	140	140	140
Thickness (mm) ±15%	1.7	1.4	1-1.1	0.98	-	1.2	0.6	0.7	1.5	2.98	1.2-1.3	1.2-1.3	1.2-1.3	1.2-1.3
Abrasion (Martindale)	45000	50000	100000	100000	100000	100000	80000	100000	100000	75000	100000	100000	100000	100000
Pilling (EN ISO 12945-2)	3	4	4	4-5	4-5	4	4	04-Jan	3-4	4-5	4-5	4	3-4	4
Light fastness (EN ISO 105-B02)	4-6	4-5	5	6-8	5-7	5	6-7	4-6	5-7	5-7	6-7	5-7	5-6	5-7
Bleach cleanable ²⁾	-	-	-	•	-	-	-	-	-	-	-	-	-	-
Ethanol cleanable	-	-	-	•	-	-	•	-	-	-	•	•	•	•
Acoustic test BS EN ISO 10534-2:2001	•	•	•	-	-	•	-	-	-	-	-	-	-	-
Acoustic test air flow resistance EN 29053 & ISO 9053-1	-	-	-	-	-	-	•	-	-	-	•	•	•	•

¹⁾ See individual colour test result on suppliers web
²⁾ Requires chemical treatment to meet Crib 5 standard.
 Must be specifically requested when ordering. Additional cost and lead time apply.

All suppliers in this programme hold ISO 14001 certification

The stated technical product characteristics are provided for information purposes only, are non-binding, and may be subject to change. The supplier's official product data sheet shall prevail in the event of any discrepancies.

