

24/7 fabrics

- heavy duty usage areas

Fabrics for observation, monitoring, intense computer work and other heavy duty areas



DESIGNED FOR HUMAN PERFORMANCE



HIGH PERFORMANCE

The 24/7 Standard Fabric & Colour Collection is our collection of fabrics, leathers and other materials.

The collection has been designed to bring out the best visual and functional qualities of these materials. All fabrics and leathers in our 24/7 Standard collection are of excellent quality. We offer short delivery times, a wide range and all our materials comply with strict environmental requirements. These fabrics are tested and approved according to our quality standards.

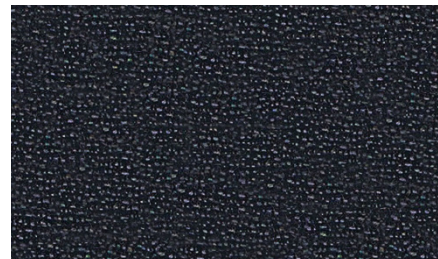
Maintenance: To maintain fabrics and leather, please vacuum with a furniture brush or use a clean cloth or sponge slightly dampened with clean lukewarm water.

NOTE! Colours on screen or in print might differ from reality. Other colours than listed here are in our Extended colour collection and might fall into a different price group and with a longer delivery time. Please contact our Customer Service for more information.

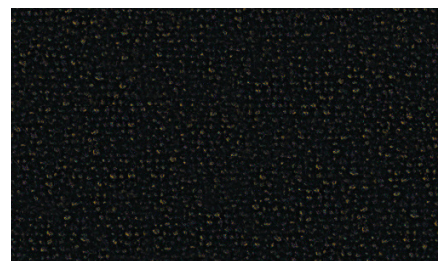
24/7 + CAMIRA

24/7+ is a tightly woven construction with inherent flame retardancy designed to withstand the rigorous 24/7 use. Made from highly resilient fibre types to create a textile that achieves optimum strength.

Material	50% polyamide / 33% wool / 10% flame retardant viscose / 7% viscose
Weight	435g/m2 ±5%
Abrasion resistance	>400,000 Martindale (EN ISO 12947-2)
Flammability	BS EN 1021: 1-2 (Cigarette & match), BS 7176 Medium Hazard IMO FTP Code (Part 8), BS 5852 Section 4 Crib 5, UNI 9175 Class 1 IM
Light fastness	5 (EN ISO 105 - B02)
Rubbing fastness	4/4 (Wet/Dry) (EN ISO 105X12)
Environmental facts	Manufacturing process - fully compliant with ISO 14001
Design	Camira Design Studio
Produced in	United Kingdom
Cleaning	Professional dry cleaning (For further info follow Camira's cleaning guide – www.camirafabrics.com)



WK002



WK012 (S)



WK017



Flammability

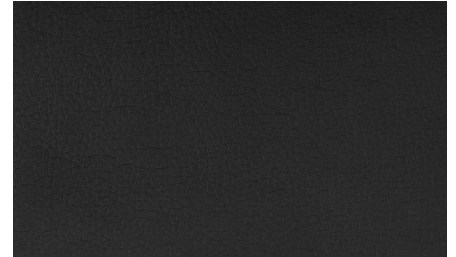


24 hour use



DOLCE (SPRADLING)

Dolce is a polyurethane based synthetic leather with a leather grain look. It is supple with a soft touch and a comfortable grip. It's high durability and good surface resistance makes it suitable for high demanding environments.



DCE6728

Material	100% Polyurethane (100% Rayon Backing)
Weight	340.00gr/m2
Abrasion resistance	300 000 Martindale (EN ISO 12947-2)
Flammability	BS EN 1021: 1-2 (Cigarette & match), BS 5852 - Source#0, IMO Res. A.652 (16) 8.2,8.3, CA TB 117-2013
UV Stability	4 (ASTM D1148)
Crocking resistance	4(Wet/Dry) (AATCC8)
Environmental facts	ISO 14001 certified company, No heavy metals
Design	Spradling Design Team
Produced in	Germany
Cleaning & disinfection	For info follow cleaning guidelines www.spradling.com

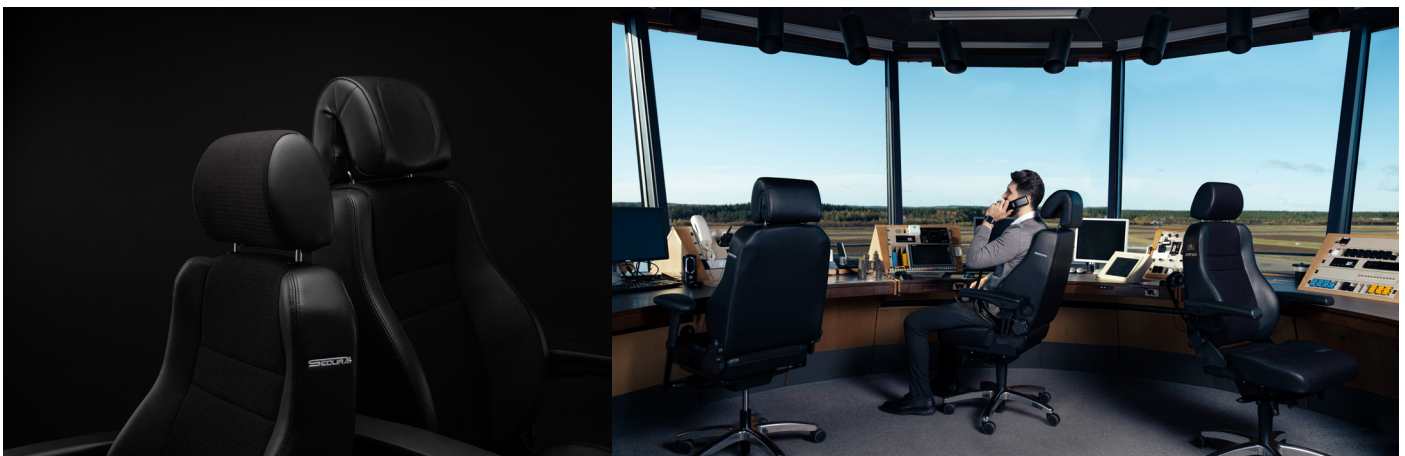
NOTE! Only available for RH Secur24 (inner seat- and back pad)



Flammability



24 hour use



For more info see www.flokk.com/rh

ULTRA (CLIMATEX/JAB)

Ultra is a light and durable fabric made with a mix of natural and synthetic fibers, combined to fulfill the Climatex textile lock technology. This innovative weaving technique allows moisture and temperature to be regulated and provides the fabric with its flame-retardant and durable properties.

Material	72% Cradura TM, PA (Polyamide polymer) 16% wool, 12% Redesigned Lenzing FR TM, CV(Flame-resistant cellulosic fiber)
Weight	437 g/lfm
Abrasion resistance	500'000 Martindale, EN ISO 12947-2
Flammability	BS EN 1021: 1&2 (Cigarette & match), BS 5852-0/1, California TB 117-2013
Light fastness	6-7 (EN ISO 105-B02)
Rubbing fastness	4-5 (Wet/Dry) (EN ISO 105X12)
Environmental facts	Cradle to Cradle Silver, Oekotex 100, Recyclable with separable components, using renewable energy in production
Design	Climatex design studio
Produced in	Germany
Cleaning & disinfection	Professional dry cleaning (For further info please contact www.climatex@jab.de)

CLI054, CLA093, CLI095 – Available as Special request for RH Secur24
Approved for: RH Focus & available as special request for RH Secur24



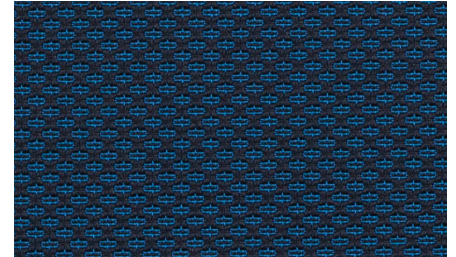
Flammability



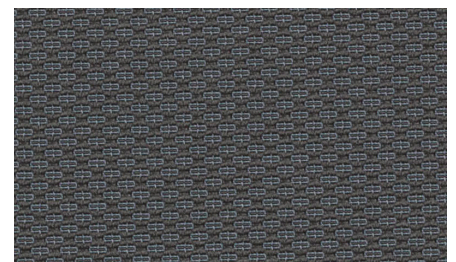
24 hour use



100% Recyclable



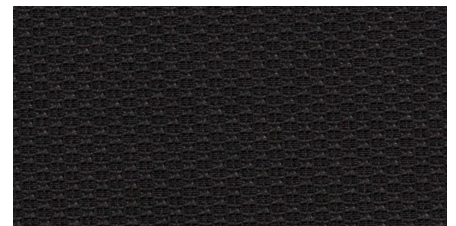
CLI054



CLI093



CLI095



CLI099



STRONG (CLIMATEX/JAB)

Strong is a durable 24/7 fabric specially designed with Climatex® Dualcycle™. It's unique weave construction and fiber mix make it climate-regulating, moisture absorbent and flame retardant. This enables good abrasion resistance for long-term use in the most demanding environments. It's honeycomb patterned texture creates depth and a smooth touch.



Black
ST0099

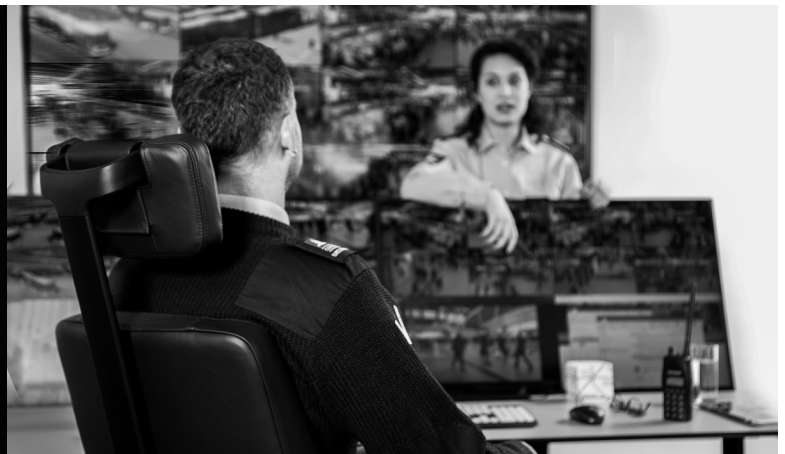
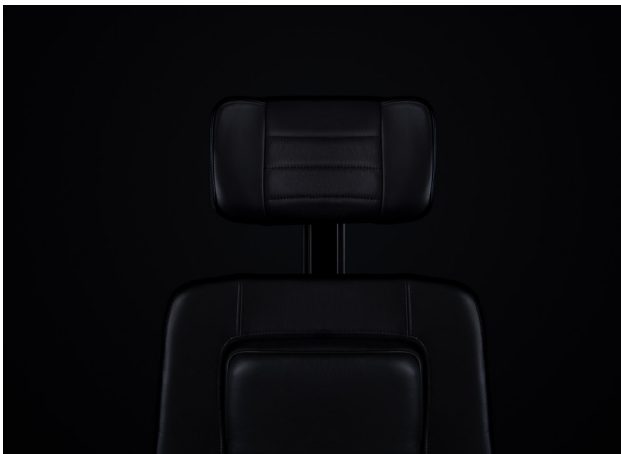
Material	72% Cradura™ (PA), 16% Certified virgin wool (WV), 12% redesigned Lenzing FR™ (CVFR)
Weight	415 g/lfm
Abrasion resistance	500 000 Martindale (EN ISO 12947-2)
Flammability	EN 1021-1/2, BS 5852-0/1, CA TB 117-2013, IMO FTP Code 2010 Part 8
Light fastness	6-7 (EN ISO 105 - B02)
Rubbing fastness	4-5/4-5 (Wet/Dry) (EN ISO 105X12)
Perspiration fastness	5/5 (Alcaline/acid) EN ISO 105-E04
Pilling	4 (EN ISO 12945-2)
Environmental facts	Cradle to Cradle Certified™ gold, Oeko-Tex® Standard 100, recyclable
Design	Climatex Design team
Produced in	Germany
Cleaning	Professional dry cleaning (For further info please contact www.climatex@jab.de)



Flammability



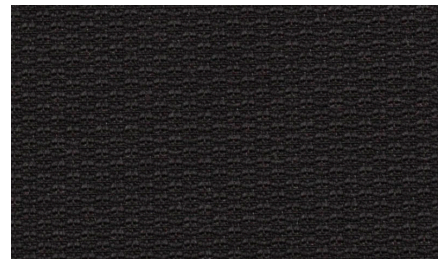
24 hour use



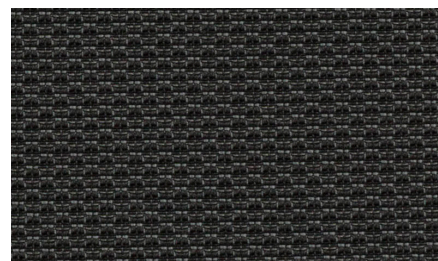
STEEL (CLIMATEX/JAB)

Steel is a durable 24/7 fabric specially designed with Climatex® Dualcycle™. It's unique weave construction and fiber mix make it climate-regulating, moisture absorbent and flame retardant. This enables good abrasion resistance for long-term use in the most demanding environments. It's honeycomb patterned texture creates depth and a smooth touch.

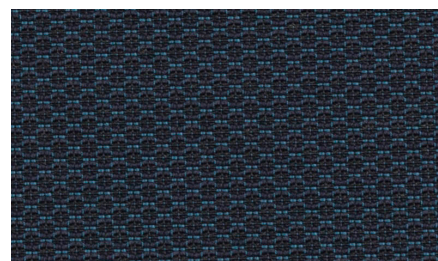
Material	62 % Cradura™ (PA), 14 % Certified Virgin Wool (WV), 10 % Redesigned Lenzing FR™ (CVFR), 11 % PES, 3 % Steel (MTF)
Weight	452 g/lfm
Abrasion resistance	500'000 Martindale, EN ISO 12947-2)
Flammability	EN 1021-1/2, BS 5852-0/1, CA TB 117-2013, IMO FTP Code 2010 Part 8, NFPA260
Light fastness	6 - 7, EN ISO 105-B02
Rubbing fastness	4-5/4-5 (Wet/Dry) (EN ISO 105X12)
Perspiration fastness	5/5 (Alcaline/acid) EN ISO 105-E04
Pilling	4-5 (EN ISO 12945-2)
Environmental facts	Oeko-Tex® Standard 100
Design	Climatex Design team
Produced in	Germany
Cleaning	Professional dry cleaning (For further info please contact www.climatex@jab.de)



CX 1053-099



CX 1053-093



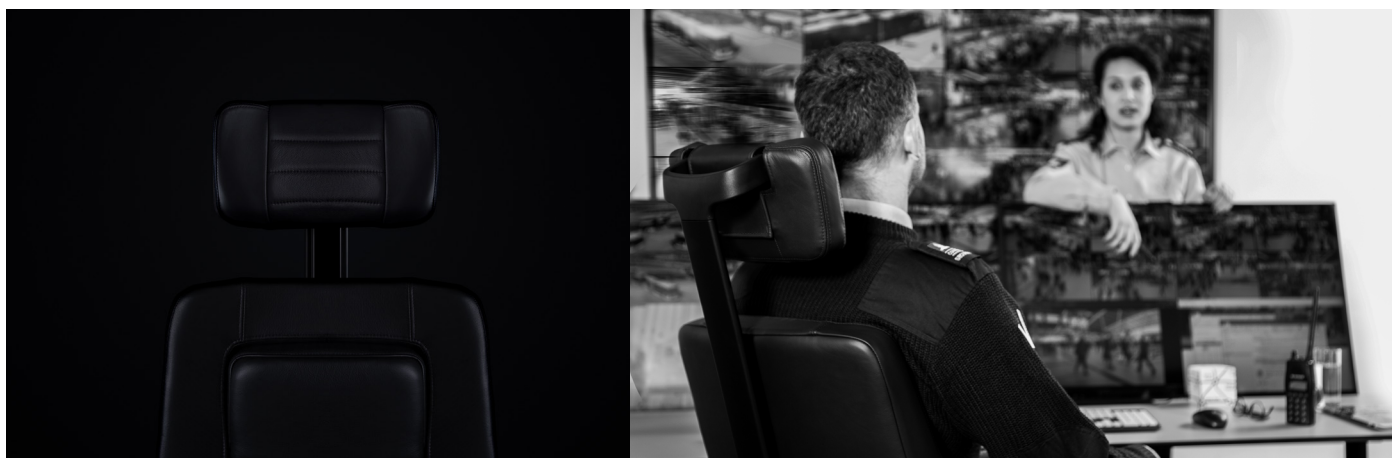
CX 1053-051



Flammability

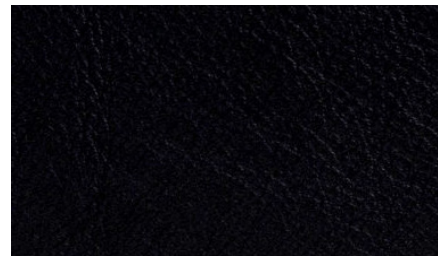


24 hour use



TRENTO (ECCO LEATHER)

A full-grain, vegetable tanned leather made from cowhides of European origin. With a soft touch and natural character, it is designed to age with beauty.



TR0760

Lightfastness	5 (ABNT NBR 14392 – Grey & Blue Scale ≥ 3)
Rubbing	Wet 500 cycles 4,5 - Dry 1000 cycles 4,5 / Sweat 100 cycles 4,5 – ISO 11640
Finish-adhesion	≥ 5 N/1,0cm – ISO 11644
Environmental facts	Vegetable tanned, no metallic colours
Produced in	Italy
Cleaning	Follow the guidelines: https://www.flokk.com/en/norway/support/care-and-maintenance

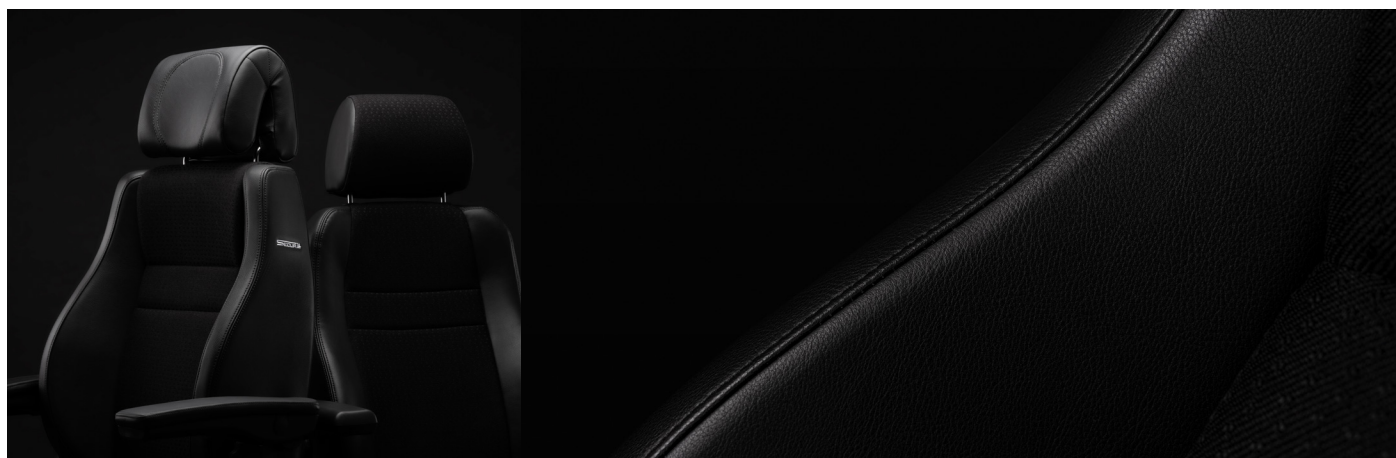
Only available for RH Secur24



Flammability



24 hour use



ELMOSOFT (ELMO LEATHER)

Elmosoft is a chrome free supreme quality semi-aniline grain leather from Scandinavian cattle. It is soft and pliable with an outstanding comfort and durability. Visible insect-bites and scars from healed wounds add to the authentic quality and character of the leather.

Flammability	BS EN 1021: 1-2 (Cigarette & match), BS 5852 Crib 5, CA TB 117-2013, DIN 4102 -1 (B1), IMO 2010 FTP Code Part 8 (IMO652), UNI 9175, Önorm B 3825, UNI 9175
Light fastness	6 (EN ISO 105-B02)
Rubbing	Wet 80/4 - Dry 2000/4 - Sweat 50/4 - ISO 11640
Finish-adhesion	≥ 2 N/cm - ISO 11644
Tear-strength	≥ 20 N/cm DIN 53329-A
Environmental facts	100% free of heavy metals, tanned without using chromium salts, ISO 14001 certified company, Clean water tanning technology with biological Water Treatment Plant and 100% CO2 neutral on energy.
Animal Welfare	All hides are by-products from the meat and dairy industries with traceability back to the farm, Following strict regulations on animal welfare in compliance with national and international standards as those issued by the World Organization for Animal Health (6 animal welfare freedoms)
Produced in	Sweden
Cleaning	Follow the guidelines by our supplier – www.elmoleather.com

Approved for: RH Secur24, RH Focus, RH Logic 200/220 Elite



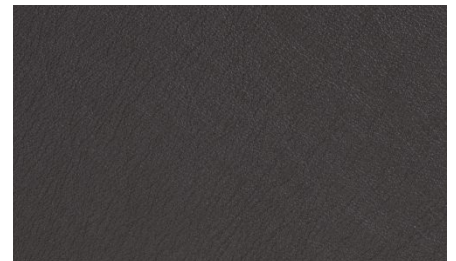
Flammability



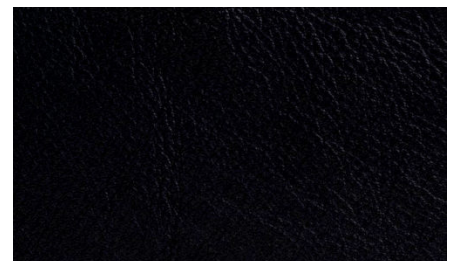
24 hour use



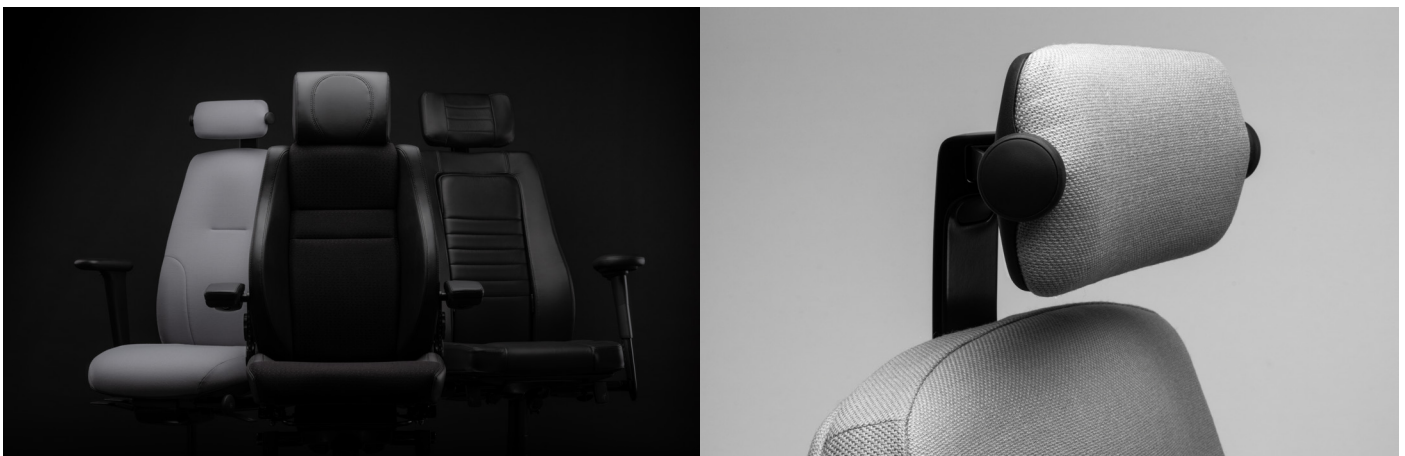
EL33004



EL93068



EL99999





[FLOKK.COM/RH](https://flokk.com/rh)

Flokk AS

Drammensveien 145 - P.o Box Postboks 45
Skøyen, 0212 Oslo, Norway Tel: +47 22 59 59 00 -
info-no@flokk.com